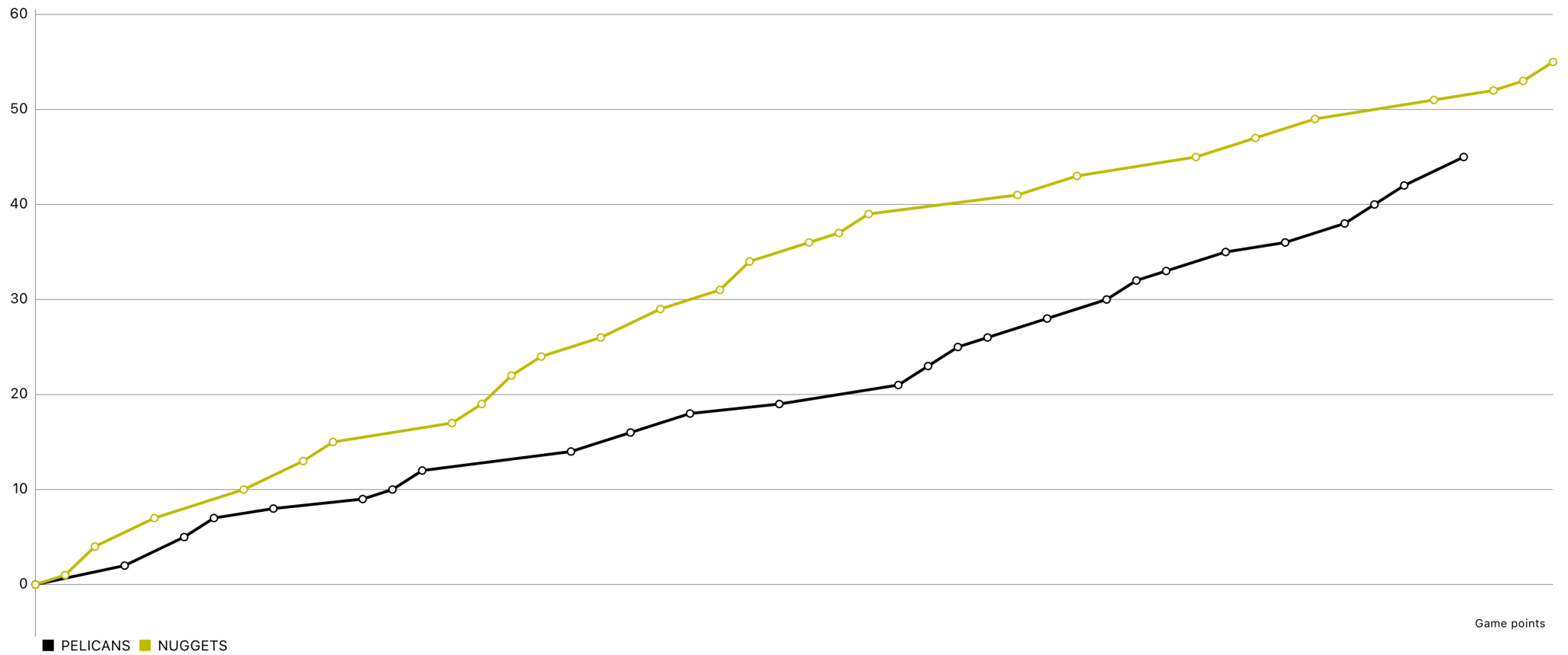


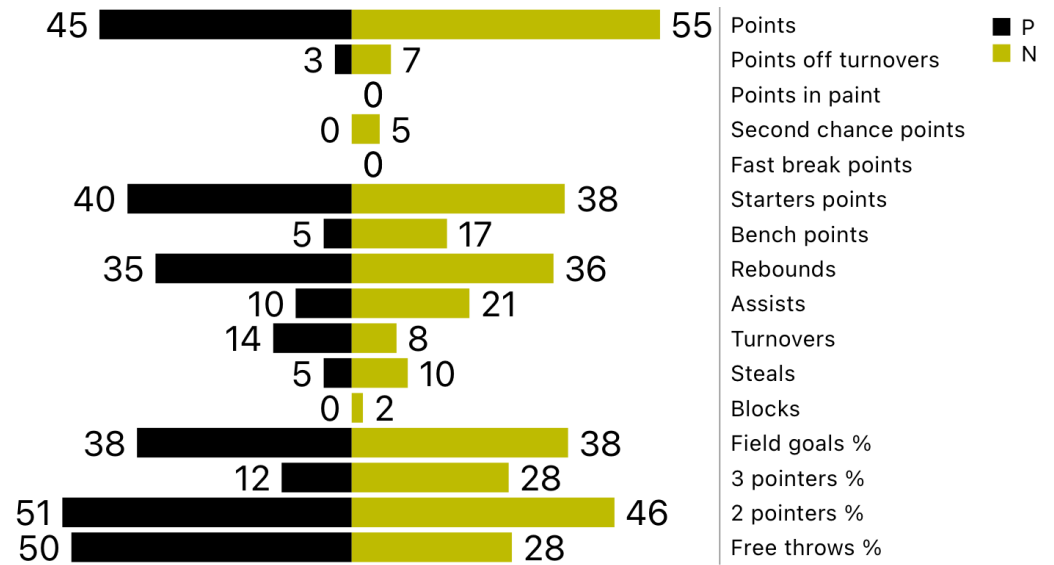
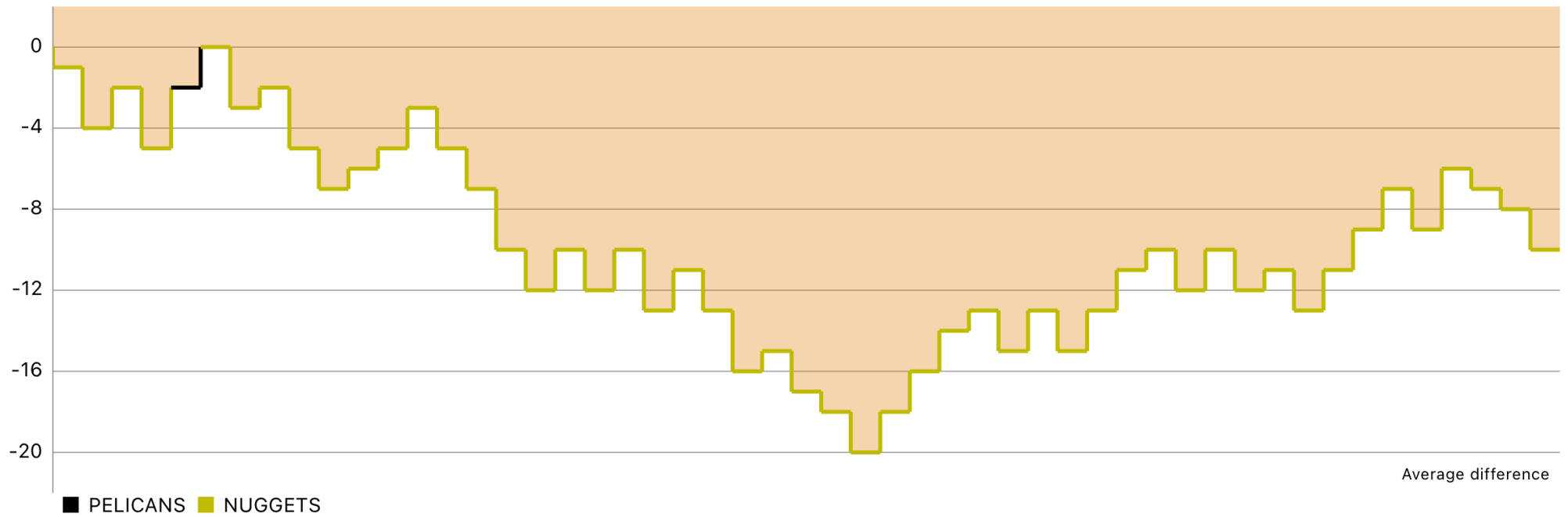
# PELICANS (45) vs (55) NUGGETS

Game report (Oct 20, 2024)



Basketball  
Stats Assistant





Points	Q1	Q2	Total
PELICANS	19	26	45
NUGGETS	36	19	55

Possessions	Q1	Q2	Total
PELICANS	27	28	55
NUGGETS	31	25	56

PELICANS	Team leaders	NUGGETS
Pat Kelly ( 13 )	Points	Matt Dowdell-Smith ( 17 )
Willy Graiver ( 4 )	Assists	Tyler Hethcoat ( 5 )
Pat Kelly ( 13 )	Rebounds	Matt Dowdell-Smith ( 12 )
Pat Kelly ( 15 )	Efficiency	Matt Dowdell-Smith ( 20 )

Largest lead	Worst lead
20 (19-39)	-0 (0-0)

PELICANS

N°	Player	MIN	PTS	FGM	FGA	FG%	3PM	3PA	3P%	2PM	2PA	2P%	FTM	FTA	FT%	OREB	DREB	REB	AST	TOV	STL	BLK	SR	PF	PFD	PIR	EFF	+/-
6	* John Bowllan	40:00	4	2	3	66.7%	0	0	0.0%	2	3	66.7%	0	0	0.0%	1	3	4	0	2	0	0	0	3	0	2	5	-9
10	Zach Lane	00:00	0	0	0	0.0%	0	0	0.0%	0	0	0.0%	0	0	0.0%	0	0	0	0	0	0	0	0	0	0	0	0	-
13	* Matt Waddell	20:00	10	5	9	55.6%	0	1	0.0%	5	8	62.5%	0	0	0.0%	0	3	3	0	1	0	0	0	1	0	7	8	-6
14	Evan Wood	00:00	4	2	2	100.0%	0	0	0.0%	2	2	100.0%	0	0	0.0%	0	2	2	0	0	0	0	0	0	0	6	6	0
16	* Willy Graiver	40:00	5	2	9	22.2%	1	7	14.3%	1	2	50.0%	0	0	0.0%	0	1	1	4	3	3	0	0	2	0	1	3	-11
17	* Yontz Sutton	40:00	8	3	10	30.0%	1	5	20.0%	2	5	40.0%	1	3	33.3%	3	7	10	1	4	1	0	0	3	0	4	7	-13
37	Eldad Zahinda	20:00	1	0	3	0.0%	0	0	0.0%	0	3	0.0%	1	2	50.0%	2	0	2	2	0	0	0	0	2	0	-1	1	-3
38	* Pat Kelly	20:00	13	4	11	36.4%	0	3	0.0%	4	8	50.0%	5	9	55.6%	4	9	13	3	4	1	0	0	3	0	12	15	-8
	<b>Total</b>		<b>45</b>	<b>18</b>	<b>47</b>	<b>38.3%</b>	<b>2</b>	<b>16</b>	<b>12.5%</b>	<b>16</b>	<b>31</b>	<b>51.6%</b>	<b>7</b>	<b>14</b>	<b>50.0%</b>	<b>10</b>	<b>25</b>	<b>35</b>	<b>10</b>	<b>14</b>	<b>5</b>	<b>0</b>	<b>0</b>	<b>14</b>	<b>0</b>	<b>31</b>	<b>45</b>	<b>-</b>

NUGGETS

N°	Player	MIN	PTS	FGM	FGA	FG%	3PM	3PA	3P%	2PM	2PA	2P%	FTM	FTA	FT%	OREB	DREB	REB	AST	TOV	STL	BLK	SR	PF	PFD	PIR	EFF	+/-
0	* Tyler Hethcoat	40:00	9	4	12	33.3%	1	4	25.0%	3	8	37.5%	0	0	0.0%	3	7	10	5	5	3	0	0	1	0	13	14	6
7	* Matt Glidden	20:00	5	2	7	28.6%	1	2	50.0%	1	5	20.0%	0	0	0.0%	1	1	2	4	0	0	1	0	4	0	3	7	0
12	* Matt Dowdell-Smith	40:00	17	7	12	58.3%	2	4	50.0%	5	8	62.5%	1	6	16.7%	7	5	12	2	2	1	0	0	2	0	18	20	15
19	* John Hardies	20:00	0	0	0	0.0%	0	0	0.0%	0	0	0.0%	0	0	0.0%	0	5	5	2	0	2	0	0	2	0	7	9	8
25	Ryan Gormley	40:00	13	5	11	45.5%	2	5	40.0%	3	6	50.0%	1	6	16.7%	0	2	2	3	1	2	0	0	3	0	5	8	15
26	Thomas Guild	00:00	0	0	1	0.0%	0	1	0.0%	0	0	0.0%	0	0	0.0%	1	1	2	1	0	0	1	0	0	0	3	3	2
35	* Mike Warren	40:00	7	2	8	25.0%	1	6	16.7%	1	2	50.0%	2	2	100.0%	0	2	2	1	0	2	0	0	5	0	1	6	5
41	Dakota Smith	00:00	4	2	6	33.3%	0	3	0.0%	2	3	66.7%	0	0	0.0%	1	0	1	3	0	0	0	0	1	0	3	4	-1
	<b>Total</b>		<b>55</b>	<b>22</b>	<b>57</b>	<b>38.6%</b>	<b>7</b>	<b>25</b>	<b>28.0%</b>	<b>15</b>	<b>32</b>	<b>46.9%</b>	<b>4</b>	<b>14</b>	<b>28.6%</b>	<b>13</b>	<b>23</b>	<b>36</b>	<b>21</b>	<b>8</b>	<b>10</b>	<b>2</b>	<b>0</b>	<b>18</b>	<b>0</b>	<b>53</b>	<b>71</b>	<b>-</b>

## Tyler Hethcoat

9 points | 0 fast break points | 0 points in paint | 2 second chance points



	FG	T3	T2	FT
Made	4	1	3	0
Attempted	12	4	8	0
%	33.3%	25.0%	37.5%	0.0%

Minutes 40:00

+/- 6

Efficiency 14

Def. rebounds 7

Off. rebounds 3

Rebounds 10

Assists 5

Turnovers 5

Steals 3

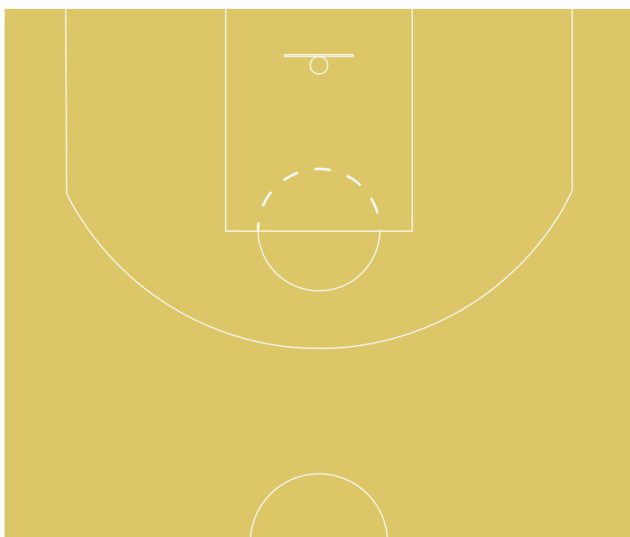
Blocks 0

Personal fouls 1

Fouls drawn 0

## Matt Glidden

5 points | 0 fast break points | 0 points in paint | 0 second chance points



	FG	T3	T2	FT
Made	2	1	1	0
Attempted	7	2	5	0
%	28.6%	50.0%	20.0%	0.0%

Minutes 20:00

+/- 0

Efficiency 7

Def. rebounds 1

Off. rebounds 1

Rebounds 2

Assists 4

Turnovers 0

Steals 0

Blocks 1

Personal fouls 4

Fouls drawn 0

## Matt Dowdell-Smith

17 points | 0 fast break points | 0 points in paint | 0 second chance points



	FG	T3	T2	FT
Made	7	2	5	1
Attempted	12	4	8	6
%	58.3%	50.0%	62.5%	16.7%

Minutes 40:00

+/- 15

Efficiency 20

Def. rebounds 5

Off. rebounds 7

Rebounds 12

Assists 2

Turnovers 2

Steals 1

Blocks 0

Personal fouls 2

Fouls drawn 0

## John Hardies

0 points | 0 fast break points | 0 points in paint | 0 second chance points



	FG	T3	T2	FT
Made	0	0	0	0
Attempted	0	0	0	0
%	0.0%	0.0%	0.0%	0.0%

Minutes 20:00

+/- 8

Efficiency 9

Def. rebounds 5

Off. rebounds 0

Rebounds 5

Assists 2

Turnovers 0

Steals 2

Blocks 0

Personal fouls 2

Fouls drawn 0

## Ryan Gormley

13 points | 0 fast break points | 0 points in paint | 0 second chance points



	FG	T3	T2	FT
Made	5	2	3	1
Attempted	11	5	6	6
%	45.5%	40.0%	50.0%	16.7%

Minutes 40:00

+/- 15

Efficiency 8

Def. rebounds 2

Off. rebounds 0

Rebounds 2

Assists 3

Turnovers 1

Steals 2

Blocks 0

Personal fouls 3

Fouls drawn 0

## Thomas Guild

0 points | 0 fast break points | 0 points in paint | 0 second chance points



	FG	T3	T2	FT
Made	0	0	0	0
Attempted	1	1	0	0
%	0.0%	0.0%	0.0%	0.0%

Minutes 00:00

+/- 2

Efficiency 3

Def. rebounds 1

Off. rebounds 1

Rebounds 2

Assists 1

Turnovers 0

Steals 0

Blocks 1

Personal fouls 0

Fouls drawn 0

## Mike Warren

7 points | 0 fast break points | 0 points in paint | 0 second chance points



	FG	T3	T2	FT
Made	2	1	1	2
Attempted	8	6	2	2
%	25.0%	16.7%	50.0%	100.0%

Minutes 40:00

+/- 5

Efficiency 6

Def. rebounds 2

Off. rebounds 0

Rebounds 2

Assists 1

Turnovers 0

Steals 2

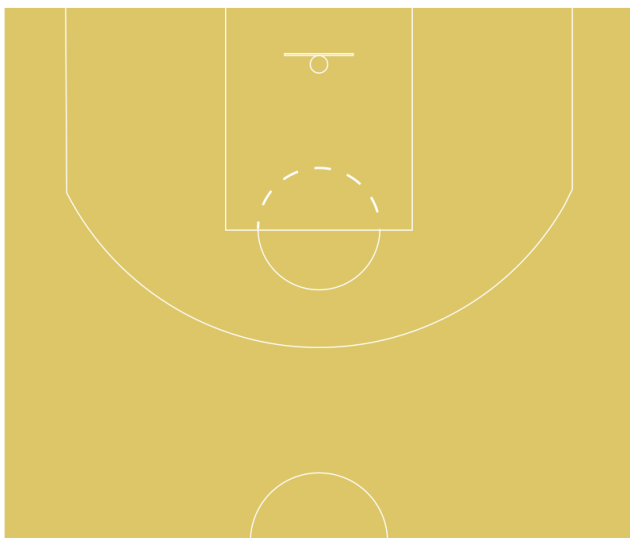
Blocks 0

Personal fouls 5

Fouls drawn 0

## Dakota Smith

4 points | 0 fast break points | 0 points in paint | 0 second chance points



	FG	T3	T2	FT
Made	2	0	2	0
Attempted	6	3	3	0
%	33.3%	0.0%	66.7%	0.0%

Minutes 00:00

+/- -1

Efficiency 4

Def. rebounds 0

Off. rebounds 1

Rebounds 1

Assists 3

Turnovers 0

Steals 0

Blocks 0

Personal fouls 1

Fouls drawn 0



## Legend

PF-PA	Points in favour - Points against
FGM	Field Goals Made
FGA	Field Goals Attempted
FG%	Field Goal Percentage -> $(FGM / FGA) * 100$
3PM	3 Point Field Goals Made
3PA	3 Point Field Goals Attempted
3P%	3 Point Field Goals Percentage -> $(3PM / 3PA) * 100$
2PM	2 Point Field Goals Made
2PA	2 Point Field Goals Attempted
2P%	2 Point Field Goals Percentage -> $(2PM / 2PA) * 100$
FTM	Free Throws Made
FTA	Free Throws Attempted
FT%	Free Throws Percentage -> $(FTM / FTA) * 100$
OREB	Offensive Rebounds
DREB	Defensive Rebounds
REB	Rebounds
AST	Assists
TOV	Turnovers
STL	Steals
BLK	Blocks
SR	Shots rejected
PF	Personal Fouls
PFD	Personal Fouls Drawn
PIR	Performance Index Rating -> $((PTS + REB + AST + STL + BLK + PFD) - ((FGA - FGM) + (FTA - FTM) + TO + PF))$
EFF	Efficiency -> $((PTS + REB + AST + STL + BLK) - ((FGA - FGM) + (FTA - FTM) + TO))$
+/-	Plus Minus